



MODELO / MODEL

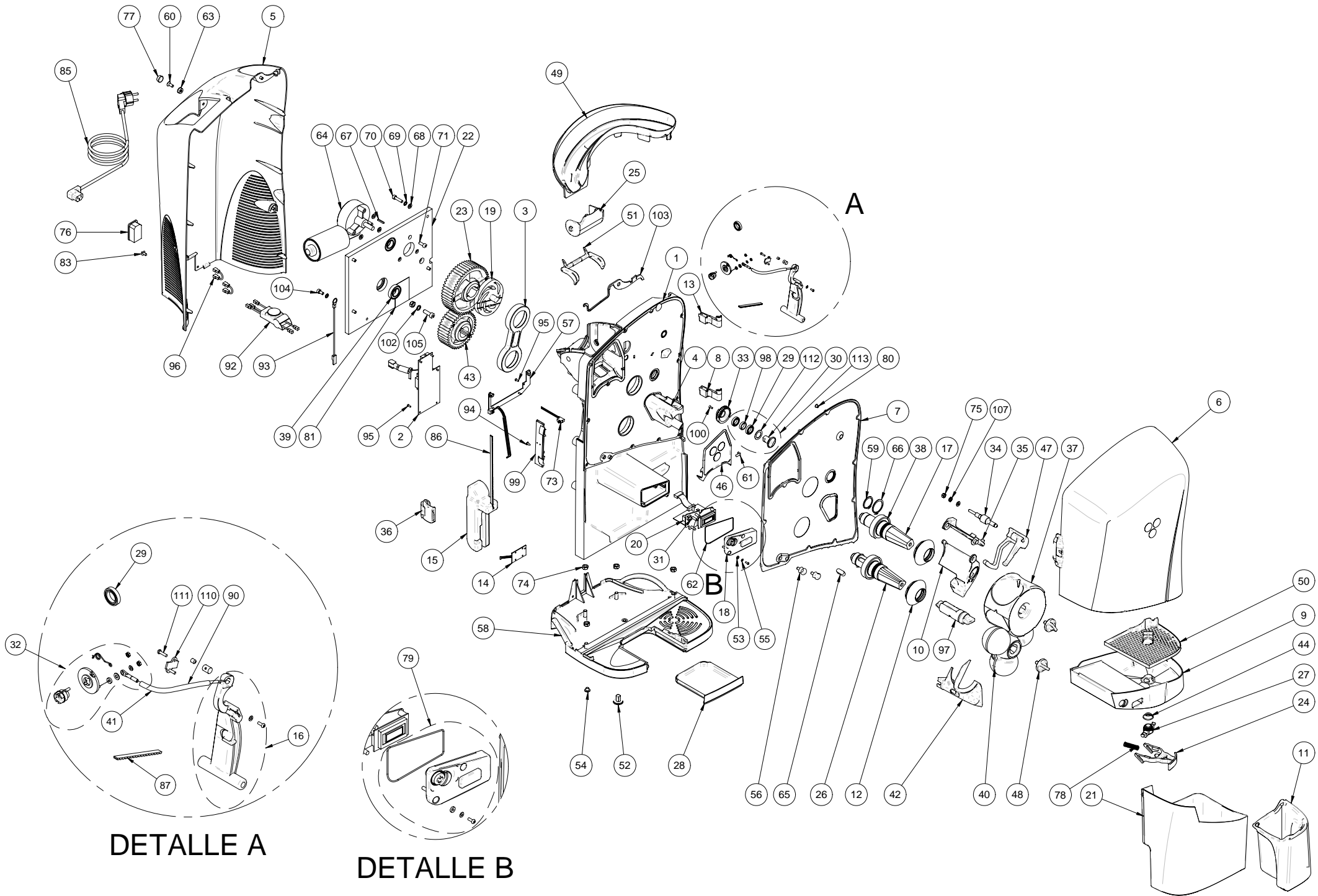
MINEX

Nr. Desde/from 333375 hasta/to

Rev 03

INDICE / INDEX

| | |
|--|-------|
| Vista explosionada/Exploded view..... | Pag 2 |
| Lista de piezas/ Part list..... | Pag 3 |
| Esquema electrónico/Electronic diagram | Pag 8 |



| NÚMERO DE PIEZA PART NUMBER | REFERENCIA REFERENCE | COMPUESTO POR COMPOSED BY | DESCRIPCIÓN | DESCRIPTION | CANTIDAD POR MÁQUINA QUANTITY PER MACHINE | LOTE DISTRIBUCION DISTRIBUTION LOT |
|--------------------------------------|-------------------------|------------------------------|------------------------------------|-----------------------------------|--|---|
| 1 | 33.1034.000 | | Modulo Bastidor MX | Plastic frame module MX | 1 | 1 |
| | | 1 Ud / 13.962.001 | Bastidor MX | Plastic frame MX | | |
| | | 2 Ud / 225.3320.000 | Soporte cuña extractora | Pell ejectors pivot holders | | |
| | | 4 Ud / 180.0038.000 | Tareinsert autoroscante | Tareinsert self-screwing M6 brass | | |
| | | 1 Ud / 13.961.001 | Frontal inox con juntas MX | S.S. Front plate w/rings MX | | |
| | | 1 Ud / 210.0033.100 | Soporte fijo volteador MX | Twirler blade bracket MX | | |
| | | 1 Ud / 210.0029.001 | Arrastre exterior | Outer pulling dispenser | | |
| | | 1 Ud / 210.0023.001 | Arrastre interior MX | Pulling dispenser MX | | |
| | | 1 Ud / 210.0045.001 | Resorte arrastre alimentador MX | Feeder dispenser spring MX | | |
| | | 2 Ud / 100.1901.003 | Tuerca DIN 934 M3 I | DIN 934 M3 I nut | | |
| | | 1 Ud / 140.0902.015 | Rodamiento 6802 2RS Inox | Bearing 6802 2RS Inox | | |
| | | 2 Ud/ 210.0018.000 | Eje puerta MX | MX feeder door pivot | | |
| | | 1 Ud /13.967.000 | Tubo guia MX | Steel cable guide tube | | |
| | | 1 Ud / 13.964.100 | Kit cable rotula MX | Steel feeder cable set MX | | |
| | | 3 Ud/ 100.0919.026 | Tornillo DIN 7981 B 3,5 x 13 Inox | DIN 7981 B 3,5 x 13 I screw | | |
| | | 11 Ud / 180.0032.000 | Expansionador Heyco 072 5899 | Expansible thread heyco | | |
| 1 Ud / 210.0074.000 | Juego de juntas MX | MX Joint set | | | | |
| 1 Ud / 105.0910.003 | Arandela DIN 125 D3 I | DIN 125 D3 I washer | | | | |
| 2 | 33.1025.000 | | Modulo potencia MX | Main control board MX | 1 | 5 |
| | | 1Ud / 13.612.002 | Modulo potencia MX | Main control board MX | | |
| | | 1Ud / 155.0039.000 | Brida sujeta cables | Plastic clamp | | |
| 3 | 210.0046.000 | | Refuerzo en ocho | Bearing "8" housing MX | 1 | 1 |
| 4 | 33.1032.000 | | Soporte fijo volteador MX | Twirler blade bracket MX | 1 | 1 |
| 5 | 210.0008.000 | | Tapa trasera verde MX (5) | Plastic rear cover green MX (5) | 1 | 1 |
| | 13.928.000 | | Tapa trasera plata MX (6) | Plastic rear cover silver MX (6) | 1 | 1 |
| | 210.0082.000 | | Tapa trasera naranja MX (7) | Plastic rear cover orange MX (7) | 1 | 1 |
| 6 | 33.1006.000 | | Cubierta MX | Cover MX | 1 | 5 |
| 7 | 13.961.001 | | Frontal inox con juntas MX | S.S. Front plate w/rings MX | 1 | 1 |
| 8 | 210.0011.000 | | Bisagra B MX | Plastic hinge "B" MX | 1 | 1 |
| 9 | 33.1007.000 | | Cubeta zumo MX | Filter tray MX | 1 | 1 |
| 10 | 33.1041.000 | | Soporte cuchilla volteador inox MX | Twirler blade support inox MX | 1 | 1 |
| 11 | 33.1008.000 | | Jarra verde MX (5) | Jar green MX (5) | 1 | 1 |
| | 33.1037.000 | | Jarra plata MX (6) | Jar silver MX (6) | 1 | 1 |
| | 33.1038.000 | | Jarra naranja MX (7) | Jar orange MX (7) | 1 | 1 |
| 12 | 210.0002.000 | | Reten eje MX | Shaft Fastener MX | 2 | 1 |

| | | | | | | |
|----|--------------|-------------------------------------|-----------------------------------|----------------------------|---|----|
| 13 | 210.0054.000 | | Bisagra A MX | Plastic hinge "A" MX | 1 | 1 |
| 14 | 13.614.002 | | Modulo posicionamiento MX | Stance offset board MX | 1 | 1 |
| 15 | 33.1028.000 | | Peso MX | Internal offset plate MX | 1 | 1 |
| 16 | 33.1030.000 | | Balancin MX | Rocker arm MX | 1 | 5 |
| | | 1 Ud / 210.0030.001 | Balancin MX | Rocker arm MX | | |
| | | 1 Ud / 105.0910.003 | Arandela DIN 125 D3 I | DIN 125 D3 I washer | | |
| | | 1 Ud / 100.0980.009 | Tor para plas RFX 81T 3 x 8 | Rfx 81T 3 x 8 screw | | |
| 17 | 210.0041.001 | | Eje tambor hembra MX | Upper pressing shaft MX | 1 | 1 |
| 18 | 210.0027.001 | | Tapa botonera MX | Keyboard cover MX | 1 | 1 |
| 19 | 13.960.002 | | Leva piñon MX | Gear Lever MX | 1 | 1 |
| 20 | 33.1033.000 | | Modulo botonera MX | Keyboard module MX | 1 | 5 |
| 21 | 33.1010.000 | | Cubeta de cortezas verde MX (5) | Pell bucket green MX (5) | 1 | 1 |
| | 33.1035.000 | | Cubeta de cortezas plata MX (6) | Pell bucket silver MX (6) | 1 | 1 |
| | 33.1036.000 | | Cubeta de cortezas naranja MX (7) | Pell bucket orange MX (7) | 1 | 1 |
| 22 | 210.0039.001 | | Soporte Motor MX | Motor plate bracket MX | 1 | 1 |
| 23 | 210.3301.002 | | Piñon grande plastico | Big plastic gear | 1 | 1 |
| 24 | 33.1020.100 | | Pulsador grifo MX | Faucet pusher MX | 1 | 48 |
| 25 | 33.1003.000 | | Dosificador MX | Dispenser MX | 1 | 24 |
| 26 | 210.0040.001 | | Eje tambor macho | Lower pressing shaft MX | 1 | 1 |
| 27 | 33.1018.100 | | Pistón grifo MX | Faucet MX | 1 | 40 |
| 28 | 33.1011.000 | | Bandeja goteo MX | Brip Tray MX | 1 | 48 |
| 29 | 140.0902.015 | | Rodamiento 6802 2RS Inox | Bearing 6802 2RS Inox | 3 | 1 |
| 30 | 13.931.000 | | Eje rotor MX | Twirler blade Shaft MX | 1 | 1 |
| 31 | 210.0076.000 | | Actuador pulsador ON/OFF MX | ON_OFF Minex button | 1 | 1 |
| 32 | 33.1026.000 | | Kit arrastre dosificador MX | MX dispenser driver | 1 | 10 |
| | | 1 Ud / 210.0023.001 | Arrastre interior MX | Pulling dispenser MX | | |
| | | 1 Ud / 210.0029.001 | Arrastre exterior | Outer pulling dispenser | | |
| | | 1 Ud / 210.0045.001 | Resorte arrastre alimentador MX | Feeder dispenser spring MX | | |
| | | 2 Ud / 100.1901.003 | Tuerca DIN 934 M3 I | DIN 934 M3 I nut | | |
| | | 1 Ud / 105.0910.003 | Arandela DIN 125 D3 I | DIN 125 D3 I washer | | |
| | | 1 Ud / 105.0910.004 | Arandela DIN 125 D4 I | DIN 125 D4 I washer | | |
| | | 1 Ud / 210.0088.000 | Junta plana silicona 7,5 x 3 x 2 | Silicon gasket 7,5 x 3 x 2 | | |
| 33 | 210.0025.000 | | Rotor MX | Twirler blade rotor | 1 | 1 |
| 34 | 210.0044.100 | | Eje retenedor MX | Support pivot shaft | 1 | 1 |
| 35 | 33.1040.000 | | Cuchilla volteador inox MX | Inox twirler blade MX | 1 | 5 |
| 36 | 33.1042.000 | | Kit cierre MX | Kit lock MX | 1 | 1 |
| | | 1 Ud / 210.0086.000 | Cierre cubierta plastico MX | Front cover lock MX | | |
| | | 1 Ud / 210.0087.000 | Base cierre cubierta MX | Front cover lock holder MX | | |
| | | 2Ud/ 100.0980.010 | Tornillo RFX 81T 3 x 12 | Screw RFX 81T 3 x 12 | | |
| 37 | 33.1015.000 | | Tambor hembra plastico MX | Upper pressing unit MX | 1 | 1 |
| 38 | 33.0011.000 | | Kit rodamientos 6007 | 6007 2RS bearing kit | 1 | 16 |
| | | 2 Ud / 140.0201.035 | Rodamiento 6007 2RS | 6007 2RS bearing | | |

| | | | | | | |
|----|--------------|---------------------|-----------------------------------|---------------------------------|---|----|
| 39 | 140.0202.020 | | Rodamiento 61904 2RS | Bearing 61904 2RS | 2 | 1 |
| 40 | 33.0031.000 | | Tambor macho plástico | Orange lower pressing unit | 1 | 1 |
| 41 | 13.967.000 | | Tubo guía MX | Steel cable guide tube | 1 | 1 |
| 42 | 33.0002.000 | | Cuña extractora izquierda | Left peel ejector | 1 | 48 |
| 43 | 210.3302.001 | | Piñon pequeño plastico | Small plastic gear | 1 | 1 |
| 44 | 33.1021.100 | | Junta grifo MX | Faucet rubber ring MX | 1 | 40 |
| 46 | 33.1001.000 | | Puerta alimentador MX | Feeder door MX | 1 | 48 |
| 47 | 33.1005.000 | | Retenedor MX | Bolcker MX | 1 | 12 |
| 48 | 33.0003.001 | | Kit volantes exprimi TPE | TPE securing knob kit | 1 | 25 |
| | | 2 Ud / 200.3306.004 | Volante plastico inyección | Securing knob | | |
| 49 | 33.1004.000 | | Rampa alimentador MX | Feeder ramp MX | 1 | 1 |
| 50 | 33.1009.000 | | Filtro cubeta zumo MX | Filter MX | 1 | 8 |
| 51 | 33.1002.000 | | Contrapeso MX | Counterweight MX | 1 | 20 |
| 52 | 32.1025.000 | | Pies MX | Feet MX | 4 | 30 |
| 53 | 210.0088.000 | | Junta plana silicona 7,5 x 3 x 2 | Silicon gasket 7,5 x 3 x 2 | 3 | 1 |
| 54 | 180.0033.000 | | Tapón | GPN 300 F3 plastic plug | 4 | 1 |
| 55 | 105.0910.003 | | Arandela DIN 125 D3 I | DIN 125 D3 I washer | 5 | 1 |
| 56 | 33.0006.000 | | Kit soportes pivotes cuñas ext | Pell ejectors pivot holders kit | 1 | 25 |
| | | 2 Ud / 225.3320.000 | Soporte cuña extractora | Pell ejectors pivot holders | | |
| 57 | 13.613.001 | | Barrera alimentador MX | Feeder barrier board MX | 1 | 1 |
| 58 | 13.968.101 | | Conjunto Base MX | Base set MX | 1 | 1 |
| | | 1 Ud / 210.0012.100 | Base MX | MX Base | | |
| | | 1 Ud / 210.0049.000 | Tapa base MX | MX Base cover | | |
| | | 7 Ud / 100.0919.025 | Tornillo DIN 7981 B 2,9 x 13 Inox | DIN 7981 B 2,9 x 13 I screw | | |
| | | 4 Ud / 100.0909.130 | Tornillo DIN 7991 M8 x 35 I | DIN 7991 M8 x 35 I screw | | |
| 59 | 130.0012.030 | | Anillo de seguridad DIN 471 E-30 | Security ring DIN 471 E-30 | 2 | 1 |
| 60 | 100.0909.106 | | Tornillo DIN 7991 M-6x15 I | DIN 7991 M6 X 15 I screw | 4 | 1 |
| 61 | 210.0018.000 | | Eje puerta MX | Feeder door pivot MX | 2 | 1 |
| 62 | 210.0053.000 | | Hilo torico | 1,5 x 290 Keyboardcover ring | 1 | 1 |
| 63 | 180.0035.000 | | Arandela Snacap M6 VZK Gris | M6 Snacap washer | 4 | 1 |
| 64 | 33.1024.000 | | Motor MX | Motor MX | 1 | 1 |
| | | 1Ud / 160.0132.000 | Motoreductor Bosch MX | MX Bosch motor+Gear Box | | |
| | | 2Ud / 155.0000.003 | Pin conector aereo macho MX | Male quick connector pin | | |
| | | 1Ud / 155.0000.002 | Conector aereo macho motor MX | Male quick connector motor | | |
| | | 1Ud / 115.0000.002 | Chaveta 3X3X22 | Bolt 3 x 3 x 22 | | |
| 65 | 115.0000.015 | | Chaveta 10x8x25 | Bolt 10 x 8 x 25 | 2 | 1 |
| 66 | 130.0012.035 | | Anillo de seguridad DIN 471 E-35 | Security ring DIN 471 E-35 | 2 | 1 |
| 67 | 115.0000.002 | | Chaveta 3X3X22 | Bolt 3 x 3 x 22 | 1 | 1 |
| 68 | 105.0910.006 | | Arandela DIN 125 M6 Forma A | DIN 125 D6 I washer | 8 | 1 |
| 69 | 105.0911.006 | | Arandela DIN 127 D6 I. | DIN 127 D6 I washer | 5 | 1 |
| 70 | 100.0903.108 | | Tornillo DIN 912 M6 x 25 Inox | DIN 912 M6 X 25 I screw | 4 | 1 |
| 71 | 100.0903.106 | | Tornillo DIN 912 M6 x 16 Inox | DIN 912 M6 X 16 I screw | 3 | 1 |

| | | | | | | |
|-----|--------------|-------------------------------------|------------------------------------|-----------------------------------|----|----|
| 73 | 155.0026.000 | | Micro seguridad MX | Cover safety swicth | 1 | 1 |
| 74 | 100.1901.008 | | Tuerca DIN 934 M8 Inox | DIN 934 M8 l nut | 5 | 1 |
| 75 | 100.1901.006 | | Tuerca DIN 934 M6 Inox | DIN 934 M6 l nut | 1 | 1 |
| 76 | 155.1120.000 | | Base conexión electrica | Power supply socket | 1 | 1 |
| 77 | 180.0034.000 | | Tapón Snapcap M6 negro | Black snapcap plug | 4 | 1 |
| 78 | 33.1019.000 | | Muelle pulsador grifo MX | Faucet pusher spring MX | 1 | 40 |
| 79 | 33.1046.000 | | Kit Tapa botonera MX | Kit Keyboard cover MX | 1 | 1 |
| | | 1Ud/ 210.0027.001 | Tapa botonera MX | Keyboard cover MX | | |
| | | 1UD/ 210.0076.000 | Actuador pulsador ON/OFF MX | ON_OFF Minex button | | |
| | | 1Ud/ 210.0053.000 | Hilo torico | 1,5 x 290 Keyboardcover ring | | |
| | | 2Ud/ 105.0910.003 | Arandela DIN 125 D3 l | DIN 125 D3 l washer | | |
| | | 3Ud/ 210.0088.000 | Junta plana silicona 7,5 x 3 x 2 | Silicon gasket 7,5 x 3 x 2 | | |
| | | 3Ud/ 100.0980.009 | Tornillo RFX 81T 3 x 8 | Rfx 81T 3 x 8 screw | | |
| 80 | 180.0032.000 | | Expansionador Heyco 072 5899 | Expansible thread heyco | 11 | 1 |
| 81 | 210.0048.000 | | Protector MX | 200 micras plastic plate MX | 1 | 1 |
| 83 | 180.0039.000 | | Expansionador DRR011-BLK | Expansible thread DRR011-BLK | 2 | 1 |
| 85 | 155.1140.000 | | Cable Schuko-IEC acodada (1) | MX schuko 90° p.supply cable (1) | 1 | 1 |
| | 155.1142.000 | | Cable GB-IEC acodada (2) | MX GB 90° power supply cable (2) | 1 | 1 |
| | 155.1141.000 | | Cable UL-IEC acodada (3) | MX UL 90° power supply cable (3) | 1 | 1 |
| | 155.1160.000 | | Cable AUS-IEC acodada (4) | MX AUS-IEC power supply cable (4) | 1 | 1 |
| 86 | 33.1029.000 | | Correa dentada peso MX | Counterweight belt MX | 1 | 10 |
| 87 | 210.0042.000 | | Correa dentada balancin MX | Rocker arm belt MX | 1 | 1 |
| 90 | 13.964.100 | | Kit cable rotula MX | Steel feeder cable set MX | 1 | 1 |
| | | 1 Ud / 210.0055.000 | Rotula | Articulation KYEH45 | | |
| | | 1 Ud / 210.0056.000 | Puntera roscada | Threaded terminal CY180031 | | |
| | | 1 Ud / 210.0058.000 | Cable de acero | Steal cable19H X 0,3 MM | | |
| | | 1 Ud / 210.0059.000 | Funda plástico | Plastic cover 3,3 X 2 | | |
| | | 1 Ud / 210.0057.000 | Puntera prisionero cable | Screw cable terminal | | |
| | | 1 Ud / 100.0927.081 | Esparrago DIN 916 M5 x 5 Inox | DIN 916 M-5x5 l allen rod | | |
| 92 | 13.966.003 | | Cables y filtro mod de potencia | Electrical inlet filter MX | 1 | 1 |
| 93 | 13.971.000 | | Cable toma de tierra | Ground wire MX | 1 | 1 |
| 94 | 100.0919.018 | | Tornillo DIN 7981 B 3,5 x 9,5 Inox | DIN 7981 B 3,5 x 9,5 l screw | 6 | 1 |
| 95 | 100.0980.009 | | Tor para plas RFX 81T 3 x 8 | Rfx 81T 3 x 8 screw | 7 | 1 |
| 96 | 13.973.001 | | Cable puente MX | Electrical Jumper MX | 2 | 1 |
| 97 | 33.1039.000 | | Bloqueo cuchilla MX | Twirler blade blocker MX | 1 | 1 |
| 98 | 210.0089.000 | | Espaciador rodamientos MX | Bearings spacer MX | 1 | 1 |
| 99 | 210.0019.003 | | Auxiliar cierre MX | Front cover lock bracket MX | 1 | 1 |
| 100 | 100.0935.043 | | Tornillo DIN 7985 M3 x 8 l | DIN 7985 M3 X 8 l screw | 1 | 1 |
| 102 | 105.0911.008 | | Arandela DIN 127 D8 Inox | DIN 127 D8 l washer | 1 | 1 |
| 103 | 210.0074.000 | | Juego de juntas MX | MX Joint set | 1 | 1 |
| 104 | 100.0903.105 | | Tornillo DIN 912 M6 x 12 l | DIN 912 M6 x 12 l screw | 1 | 1 |
| 105 | 100.0903.128 | | Tornillo DIN 912 M8 x 25 l | DIN 912 M8 x 25 l screw | 1 | 1 |

| | | | | | | |
|-----|-------------------------------------|-------------------------------------|-------------------------------|-----------------------------|---|---|
| 107 | 105.0915.006 | | Arandela DIN 6798A D6 I | DIN 6798A D6 I washer | 1 | 1 |
| 110 | 210.0075.000 | | Reten cable MX | MX Cable fastener | 1 | 1 |
| 111 | 100.0980.010 | | Tor para plas RFX 81T 3 x 12 | RFX 81T 3x12 screw | 2 | 1 |
| 112 | 210.0090.000 | | Arandela sellado rotor SLC MX | Rotor sealing washer SLC MX | 1 | 1 |
| 113 | 33.1027.000 | | Kit eje rotor MX | Kit twirler blade shaft MX | 1 | 1 |
| | | 1 Ud / 13.931.000 | Eje rotor MX | Twirler blade Shaft MX | | |
| | | 1 Ud / 170.0503.000 | Torico OR 3 x 1 | MX 3 X 1 Oring | | |
| | | 1 Ud / 100.0935.043 | Tornillo DIN 7985 M3 x 8 I | DIN 7985 M3 X 8 I screw | | |
| | | 1 Ud / 105.0910.004 | Arandela DIN 125 D4 I | DIN 125 D4 I washer | | |
| | | 1 Ud / 210.0090.000 | Arandela sellado rotor SLC MX | Rotor sealing washer SLC MX | | |
| | | 2 Ud / 140.0902.015 | Rodamiento 6802 2RS Inox | Bearing 6802 2RS Inox | | |
| | 1 Ud / 210.0089.000 | Espaciador rodamientos MX | Bearings spacer MX | | | |

- (1) MINEX
- (2) MINEX MODELO GB / GB MODELS
- (3) MINEX MODELO UL / UL MODELS
- (4) MINEX MODELO AUS / AUS MODELS
- (5) MINEX VERDE / MINEX GREEN
- (6) MINEX GRIS PLATA / MINEX SILVER GRAY
- (7) MINEX NARANJA / MINEX ORANGE

ESQUEMA ELECTRONICO MINEX MINEX ELECTRONIC DIAGRAM

